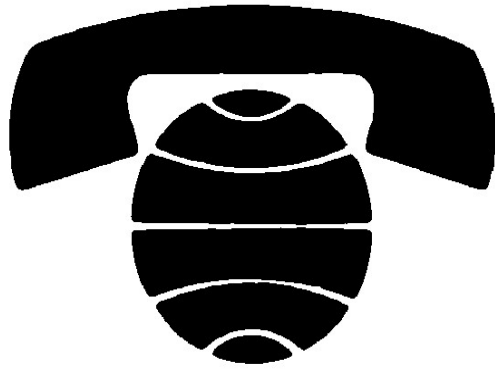


CHAPTER 43



INTERIOR COMMUNICATIONS ELECTRICIAN (IC)

NAVPERS 18068F- 43G
Change 96

Updated: October 2023

TABLE OF CONTENTS
INTERIOR COMMUNICATIONS ELECTRICIAN (IC)

SCOPE OF RATING	IC-4
GENERAL INFORMATION	IC-5
INTERIOR COMMUNICATIONS OPERATOR	IC-6
ALARM, SAFETY, AND WARNING SYSTEMS	IC-6
AUXILIARY POWER AND SUPPORT SYSTEMS	IC-6
DATA CONVERSION AND DISTRIBUTION	IC-6
EQUIPMENT ADMINISTRATION	IC-7
INTERIOR COMMUNICATIONS (IC)	IC-8
MULTIMEDIA ENTERTAINMENT, COMMUNICATION, AND VIDEO MONITORING SYSTEMS	IC-8
TECHNICAL CORE FUNDAMENTALS	IC-10
VISUAL LANDING AIDS (VLA)	IC-11
INTERIOR COMMUNICATIONS TECHNICIAN	IC-13
ALARM, SAFETY, AND WARNING SYSTEMS	IC-13
AUXILIARY POWER AND SUPPORT SYSTEMS	IC-13
DATA CONVERSION AND DISTRIBUTION	IC-14
EQUIPMENT ADMINISTRATION	IC-15
INDICATING, METERING, AND ORDERING	IC-16
INTERIOR COMMUNICATIONS (IC)	IC-16
MULTIMEDIA ENTERTAINMENT, COMMUNICATION, AND VIDEO MONITORING SYSTEMS	IC-17
NAVIGATION SYSTEMS	IC-19
TECHNICAL CORE FUNDAMENTALS	IC-19
VISUAL LANDING AIDS (VLA)	IC-22
INTERIOR COMMUNICATIONS ADMINISTRATOR	IC-24
ALARM, SAFETY, AND WARNING SYSTEMS	IC-24
AUXILIARY POWER AND SUPPORT SYSTEMS	IC-24
DATA CONVERSION AND DISTRIBUTION	IC-24
EQUIPMENT ADMINISTRATION	IC-25
INDICATING, METERING, AND ORDERING	IC-25
INTERIOR COMMUNICATIONS (IC)	IC-25

TABLE OF CONTENTS (CONT'D)
INTERIOR COMMUNICATIONS ELECTRICIAN (IC)

MULTIMEDIA ENTERTAINMENT, COMMUNICATION, AND VIDEO MONITORING SYSTEMS	IC-26
NAVIGATION SYSTEMS	IC-26
TECHNICAL CORE FUNDAMENTALS	IC-26
VISUAL LANDING AIDS (VLA)	IC-28

NAVY ENLISTED OCCUPATIONAL STANDARD
FOR
INTERIOR COMMUNICATIONS ELECTRICIAN (IC)



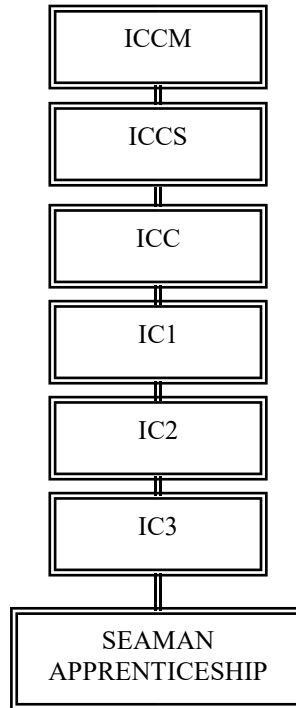
SCOPE OF RATING

Interior Communications Electricians (IC) configure and perform organizational and intermediate maintenance on alarm, safety, and warning systems, auxiliary power and support systems, data conversion and distribution systems, indicating, metering, and ordering systems, Interior Communications (IC) systems, phone systems, Audio/Video (A/V) entertainment, broadcast, communication, and monitoring systems, navigation systems, environmental systems, and Visual Landing Aids (VLA); conduct network administration and maintenance; interpret and analyze ship's blueprints and system interface diagrams; inspect, test, and make detailed casualty analyses; and direct maintenance and repair of electrical, electronic, fiber optic, electrohydraulic, electromechanical, and synchro/servo systems.

These Occupational Standard is to be incorporated in Volume I, Part B, of the Manual of Navy Enlisted Manpower and Personnel Classifications and Occupational Standards (NAVPERS 18068F) as Chapter 43.

GENERAL INFORMATION

CAREER PATTERN



Normal path of advancement to Chief Warrant Officer and Limited Duty Officer categories can be found in OPNAVINST 1420.1.

For rating entry requirements, refer to MILPERSMAN 1306-618.

SAFETY

The observance of Operational Risk Management (ORM) and proper safety precautions in all areas is an integral part of each billet and the responsibility of every Sailor; therefore, it is a universal requirement for all ratings.

Job Title**Interior Communications Operator****Job Code****003733****Job Family**

Installation, Maintenance, and Repair

NOC

TBD

Short Title (30 Characters)

INTERIOR COMMUNICATIONS OP

Short Title (14 Characters)

INT COMMS OPER

Pay Plan

Enlisted

Career Field

IC

Other Relationships and Rules

NEC VXXX series and other NECs as assigned

Job Description

Interior Communications Operators broadcast Audio/Video (A/V) communications, entertainment, and monitoring feeds; conduct network administration and maintenance; perform, coordinate, and direct the installation, configuration, maintenance, and repair of Interior Communications (IC) equipment and systems; and perform Interior Communications (IC) watchstanding.

DoD RelationshipGroup Title

Interior Communications

DoD Code

162300

O*NET RelationshipOccupation TitleTelecommunications Equipment
Installers and Repairers, Except
Line InstallersSOC Code

49-2022.00

Job FamilyInstallation, Maintenance, and
Repair**Skills***Systems Analysis**Troubleshooting**Operation and Control**Quality Control Analysis**Operation Monitoring**Management of Material Resources**Repairing**Equipment Maintenance**Installation**Systems Evaluation***Abilities***Written Comprehension**Problem Sensitivity**Information Ordering**Selective Attention**Deductive Reasoning**Originality**Oral Expression**Inductive Reasoning**Visualization**Written Expression***ALARM, SAFETY, AND WARNING SYSTEMS****Paygrade**

E4

Task Type

CORE

Task Statements

Configure Machinery Control Consoles (MCC)

AUXILLARY POWER AND SUPPORT SYSTEMS**Paygrade**

E4

Task Type

CORE

Task Statements

Configure backup power systems

E4

CORE

Perform preventive maintenance on backup power systems

E4

CORE

Replace backup power systems and components

E4

CORE

Test backup power systems

E4

CORE

Troubleshoot backup power systems and components

E5

CORE

Verify backup power system configurations

DATA CONVERSION AND DISTRIBUTION**Paygrade**

E5

Task Type

CORE

Task Statements

Configure computer and peripheral systems

E4

CORE

Configure data conversion and distribution systems

E5

CORE

Configure network systems

E5

NON-CORE

Maintain network security

E5

CORE

Maintain system password accounts

E7

NON-CORE

Manage network security

DATA CONVERSION AND DISTRIBUTION (CONT'D)

<u>Paygrade</u>	<u>Task Type</u>	<u>Task Statements</u>
E6	CORE	Manage network software and firmware operations
E6	CORE	Manage system password accounts
E4	CORE	Perform preventive maintenance on computer and peripheral systems
E4	CORE	Perform preventive maintenance on data conversion and distribution systems
E4	CORE	Perform preventive maintenance on network systems
E4	CORE	Repair computer and peripheral systems
E5	CORE	Repair data conversion and distribution systems
E5	CORE	Repair network systems
E6	NON-CORE	Supervise network security
E4	CORE	Test computer and peripheral systems
E4	CORE	Test data conversion and distribution systems
E4	CORE	Test network systems
E4	CORE	Troubleshoot computer and peripheral systems
E4	CORE	Troubleshoot data conversion and distribution systems
E5	CORE	Troubleshoot network systems
E5	CORE	Update network software and firmware
E5	CORE	Verify data conversion and distribution system configurations
E6	CORE	Verify network system configurations

EQUIPMENT ADMINISTRATION

<u>Paygrade</u>	<u>Task Type</u>	<u>Task Statements</u>
E7	CORE	Approve equipment installations, testing, and alterations
E4	CORE	Collect equipment and system status data
E7	CORE	Coordinate equipment certifications and recertifications
E7	CORE	Coordinate equipment installations, testing, and alterations
E4	CORE	Document equipment and system status data
E5	CORE	Draft procedural documents (e.g., Standard Operating Procedures (SOP), Temporary Standing Orders (TSO), Departure From Specifications (DFS), etc.)
E4	CORE	Inspect work areas, tools, and equipment
E5	CORE	Install Interior Communications (IC) equipment
E4	CORE	Inventory controlled equipment
E7	CORE	Manage divisional equipment and system configurations
E7	CORE	Manage divisional maintenance operations
E6	CORE	Manage equipment certifications and recertifications
E4	CORE	Perform Emergency Action Plans (EAP) and Emergency Destruction Plans (EDP)
E4	CORE	Provide equipment installation and alteration assistance
E6	CORE	Supervise divisional equipment and system configurations
E6	CORE	Supervise divisional maintenance operations
E5	CORE	Supervise equipment installations, testing, and alterations

EQUIPMENT ADMINISTRATION (CONT'D)

<u>Paygrade</u>	<u>Task Type</u>	<u>Task Statements</u>
E5	CORE	Supervise work center equipment and system configurations
E5	CORE	Supervise work center maintenance operations
E6	CORE	Verify equipment installations, testing, and alterations
E4	CORE	Configure Interior Communications (IC) switchboards
E4	CORE	Configure public address systems
E4	CORE	Configure sound-powered telephone systems and peripherals (e.g., circuits, boxes, switchboards, bell buzzer systems, etc.)
E6	CORE	Manage implementation of telecommunication plans for ship's service telephone systems
E4	CORE	Perform preventive maintenance on sound-powered telephone systems and peripherals (e.g., circuits, boxes, switchboards, bell buzzer systems, etc.)
E4	CORE	Repair sound-powered telephone systems and peripherals (e.g., circuits, boxes, switchboards, bell buzzer systems, etc.)
E4	CORE	Test public address systems
E4	CORE	Test sound-powered telephone systems and peripherals (e.g., circuits, boxes, switchboards, bell buzzer systems, etc.)
E4	CORE	Troubleshoot sound-powered telephone systems and peripherals (e.g., circuits, boxes, switchboards, bell buzzer systems, etc.)

MULTIMEDIA ENTERTAINMENT, COMMUNICATION, AND VIDEO MONITORING SYSTEMS

<u>Paygrade</u>	<u>Task Type</u>	<u>Task Statements</u>
E4	CORE	Align Television Direct-to-Sailor (TV-DTS) system antennas
E4	CORE	Alter Audio/Video (A/V) entertainment systems
E4	CORE	Alter centralized video distribution systems
E4	CORE	Alter telecommunication systems
E4	CORE	Alter Television Direct-to-Sailor (TV-DTS) systems
E4	NON-CORE	Alter video communication systems
E7	CORE	Approve multimedia content
E4	CORE	Broadcast Audio/Video (A/V) entertainment
E5	CORE	Broadcast telecommunications
E5	NON-CORE	Broadcast video communications
E4	CORE	Broadcast video monitoring feeds (e.g., Closed Circuit Televisions (CCTV), flight deck surveillance camera systems, etc.)
E4	CORE	Calibrate Television Direct-to-Sailor (TV-DTS) systems
E4	CORE	Configure Audio/Video (A/V) entertainment systems
E6	CORE	Configure centralized video distribution systems
E4	CORE	Configure telecommunication systems
E4	CORE	Configure Television Direct-to-Sailor (TV-DTS) systems
E5	CORE	Configure video communication systems
E4	CORE	Configure video monitoring systems (e.g., Closed Circuit Televisions (CCTV), flight deck surveillance camera systems, etc.)

MULTIMEDIA ENTERTAINMENT, COMMUNICATION, AND VIDEO MONITORING SYSTEMS (CONT'D)

<u>Paygrade</u>	<u>Task Type</u>	<u>Task Statements</u>
E6	CORE	Design centralized video distribution systems
E5	CORE	Install Audio/Video (A/V) entertainment systems
E4	CORE	Install centralized video distribution systems
E4	CORE	Install Television Direct-to-Sailor (TV-DTS) systems
E4	CORE	Inventory Naval media assets
E5	CORE	Manage Naval media assets
E4	CORE	Perform preventive maintenance on Audio/Video (A/V) entertainment systems
E4	CORE	Perform preventive maintenance on centralized video distribution systems
E4	CORE	Perform preventive maintenance on Television Direct-to-Sailor (TV-DTS) systems
E4	CORE	Perform preventive maintenance on video monitoring systems (e.g., Closed Circuit Televisions (CCTV), flight deck surveillance camera systems, etc.)
E4	NON-CORE	Produce multimedia content
E4	CORE	Repair Audio/Video (A/V) entertainment systems
E4	CORE	Repair centralized video distribution systems
E4	CORE	Repair telecommunication systems
E4	CORE	Repair Television Direct-to-Sailor (TV-DTS) systems
E5	NON-CORE	Repair video communication systems
E4	CORE	Repair video monitoring systems (e.g., Closed Circuit Televisions (CCTV), flight deck surveillance camera systems, etc.)
E6	CORE	Supervise Audio/Video (A/V) entertainment broadcasts
E6	CORE	Supervise centralized video distribution system installations
E7	CORE	Supervise video communication broadcasts
E6	CORE	Supervise video monitoring feed broadcasts (e.g., Closed Circuit Televisions (CCTV), flight deck surveillance camera systems, etc.)
E4	CORE	Test Audio/Video (A/V) entertainment systems
E4	CORE	Test centralized video distribution systems
E4	CORE	Test telecommunication systems
E4	CORE	Test Television Direct-to-Sailor (TV-DTS) systems
E5	NON-CORE	Test video communication systems
E4	CORE	Test video monitoring systems (e.g., Closed Circuit Televisions (CCTV), flight deck surveillance camera systems, etc.)
E4	CORE	Troubleshoot Audio/Video (A/V) entertainment systems
E4	CORE	Troubleshoot centralized video distribution systems
E4	CORE	Troubleshoot telecommunication systems
E4	CORE	Troubleshoot Television Direct-to-Sailor (TV-DTS) systems
E5	NON-CORE	Troubleshoot video communication systems
E4	CORE	Troubleshoot video monitoring systems (e.g., Closed Circuit Televisions (CCTV), flight deck surveillance camera systems, etc.)

MULTIMEDIA ENTERTAINMENT, COMMUNICATION, AND VIDEO MONITORING SYSTEMS (CONT'D)

<u>Paygrade</u>	<u>Task Type</u>	<u>Task Statements</u>
E6	CORE	Verify multimedia content
E6	CORE	Verify telecommunication readiness
E5	CORE	Verify Television Direct-to-Sailor (TV-DTS) system configurations and alignments

TECHNICAL CORE FUNDAMENTALS

<u>Paygrade</u>	<u>Task Type</u>	<u>Task Statements</u>
E4	CORE	Align valves
E4	CORE	Alter Commercial-Off-The-Shelf (COTS) and Non-Program of Record (Non-POR) systems (e.g., video, audio, communication, etc.)
E4	CORE	Analyze blueprints and ship's drawings
E4	CORE	Analyze schematics (e.g., mechanical drawings, electronic schematics, piping and valve drawings, etc.)
E4	CORE	Analyze technical manuals
E7	CORE	Asses Combat Information Center (CIC)/Combat Direction Center (CDC) systems operations and tactical impact
E5	CORE	Conduct watchstander briefs
E4	CORE	Configure Alternating Current (AC) circuits
E4	CORE	Configure combat systems equipment
E4	CORE	Configure Commercial-Off-The-Shelf (COTS) and Non-Program of Record (Non-POR) systems (e.g., video, audio, communication, etc.)
E4	CORE	Configure digital circuits
E4	CORE	Configure Direct Current (DC) circuits
E5	CORE	Control Electromagnetic Interference (EMI) and Radio Frequency Interference (RFI) effects on electronic systems
E5	CORE	Design Commercial-Off-The-Shelf (COTS) and Non-Program of Record (Non-POR) systems (e.g., video, audio, communication, etc.)
E4	NON-CORE	Install Commercial-Off-The-Shelf (COTS) and Non-Program of Record (Non-POR) systems (e.g., video, audio, communication, etc.)
E5	NON-CORE	Load image software
E4	CORE	Perform basic soldering on electrical and electronic equipment
E4	CORE	Perform corrosion prevention and control procedures on Interior Communications (IC) equipment and systems
E4	CORE	Perform external communications (i.e., ship-to-ship, ship-to-shore, and ship-to-air)
E4	CORE	Perform preventive maintenance on Alternating Current (AC) circuits
E4	CORE	Perform preventive maintenance on Commercial-Off-The-Shelf (COTS) and Non-Program of Record (Non-POR) systems (e.g., video, audio, communication, etc.)
E4	CORE	Perform preventive maintenance on digital circuits
E4	CORE	Perform preventive maintenance on Direct Current (DC) circuits
E4	CORE	Perform preventive maintenance on valves
E5	CORE	Procure Commercial-Off-The-Shelf (COTS) and Non-Program of Record (Non-POR) systems (e.g., video, audio, communication, etc.)
E4	CORE	Provide Interior Communications (IC) technical support
E4	CORE	Repair Alternating Current (AC) circuits

TECHNICAL CORE FUNDAMENTALS (CONT'D)

<u>Paygrade</u>	<u>Task Type</u>	<u>Task Statements</u>
E5	NON-CORE	Repair Commercial-Off-The-Shelf (COTS) and Non-Program of Record (Non-POR) systems (e.g., video, audio, communication, etc.)
E4	CORE	Repair digital circuits
E4	CORE	Repair Direct Current (DC) circuits
E5	NON-CORE	Repair fiber optic cables and connectors
E4	CORE	Repair interconnecting cables and connectors
E4	CORE	Repair Radio Frequency (RF) circuits
E4	NON-CORE	Repair valves
E4	CORE	Replace Commercial-Off-The-Shelf (COTS) and Non-Program of Record (Non-POR) systems (e.g., video, audio, communication, etc.)
E4	CORE	Replace valves
E4	CORE	Safeguard classified material
E4	CORE	Set Emission Control (EMCON) conditions
E4	CORE	Test Alternating Current (AC) circuits
E4	CORE	Test Commercial-Off-The-Shelf (COTS) and Non-Program of Record (Non-POR) systems (e.g., video, audio, communication, etc.)
E4	CORE	Test digital circuits
E4	CORE	Test Direct Current (DC) circuits
E4	CORE	Test fiber optic cables and connectors
E4	CORE	Test interconnecting cables and connectors
E4	CORE	Test Radio Frequency (RF) circuits
E4	CORE	Test valves
E4	CORE	Troubleshoot Alternating Current (AC) circuits
E4	CORE	Troubleshoot Commercial-Off-The-Shelf (COTS) and Non-Program of Record (Non-POR) systems (e.g., video, audio, communication, etc.)
E4	CORE	Troubleshoot digital circuits
E4	CORE	Troubleshoot Direct Current (DC) circuits
E4	CORE	Troubleshoot fiber optic cables and connectors
E4	CORE	Troubleshoot interconnecting cables and connectors
E4	CORE	Troubleshoot Radio Frequency (RF) circuits
E4	CORE	Troubleshoot valves
E5	CORE	Verify Alternating Current (AC) circuit configurations
E5	CORE	Verify digital circuit configurations
E5	CORE	Verify Direct Current (DC) circuit configurations
E6	CORE	Verify valve alignments

VISUAL LANDING AIDS (VLA)

<u>Paygrade</u>	<u>Task Type</u>	<u>Task Statements</u>
E4	CORE	Calibrate Visual Landing Aid (VLA) systems
E4	CORE	Configure Visual Landing Aid (VLA) systems
E4	CORE	Perform preventive maintenance on Visual Landing Aid (VLA) systems

VISUAL LANDING AIDS (VLA) (CONT'D)

<u>Paygrade</u>	<u>Task Type</u>	<u>Task Statements</u>
E4	CORE	Repair Visual Landing Aid (VLA) systems
E4	CORE	Test Visual Landing Aid (VLA) systems
E4	CORE	Troubleshoot Visual Landing Aid (VLA) systems

Job Title**Interior Communications Technician****Job Code****003734****Job Family**

Installation, Maintenance, and Repair

NOC

TBD

Short Title (30 Characters)

INTERIOR COMMUNICATIONS TEC

Short Title (14 Characters)

INT COMMS TECH

Pay Plan

Enlisted

Career Field

IC

Other Relationships and Rules

NEC VXXX series and other NECs as assigned

Job Description

Interior Communications Technicians perform, coordinate, and direct the installation, configuration, maintenance, and repair of electrical, electronic, fiber optic, electrohydraulic, electromechanical, and synchro/servo systems on ships and at shore facilities including alarm, safety, and warning systems, auxiliary power and support systems, data conversion and distribution systems, indicating, metering, and ordering systems, Interior Communications (IC) systems, Audio/Video (A/V) entertainment, communication, and monitoring systems, navigation systems, environmental systems, and Visual Landing Aids (VLA); conduct network administration and maintenance; and perform Interior Communications (IC) watchstanding.

DoD Relationship O*NET Relationship**Group Title**

Interior Communications

DoD Code

162300

Occupation TitleTelecommunications Line
Installers and Repairers**SOC Code**

49-9052.00

Job FamilyInstallation, Maintenance, and
Repair**Skills***Systems Analysis**Troubleshooting**Quality Control Analysis**Operation Monitoring**Operation and Control**Repairing**Equipment Maintenance**Reading Comprehension**Management of Material Resources**Systems Evaluation***Abilities***Written Comprehension**Problem Sensitivity**Information Ordering**Selective Attention**Deductive Reasoning**Originality**Oral Expression**Control Precision**Visualization**Inductive Reasoning***ALARM, SAFETY, AND WARNING SYSTEMS****Paygrade**

E5

Task Type

NON-CORE

Task Statements

Alter alarm, safety, and warning systems

E4

CORE

Configure alarm, safety, and warning systems

E4

CORE

Configure Machinery Control Consoles (MCC)

E4

CORE

Perform preventive maintenance on alarm, safety, and warning systems

E4

CORE

Perform preventive maintenance on Machinery Control Consoles (MCC)

E4

CORE

Repair alarm, safety, and warning systems

E4

CORE

Repair Machinery Control Consoles (MCC)

E4

CORE

Test alarm, safety, and warning systems

E4

CORE

Test Machinery Control Consoles (MCC)

E4

CORE

Troubleshoot alarm, safety, and warning systems

E4

CORE

Troubleshoot Machinery Control Consoles (MCC)

E5

CORE

Verify alarm, safety, and warning system configurations

E5

CORE

Verify Machinery Control Consoles (MCC) configurations

AUXILLARY POWER AND SUPPORT SYSTEMS**Paygrade**

E4

Task Type

CORE

Task Statements

Configure backup power systems

E4

CORE

Configure cathodic protection systems

E4

CORE

Perform preventive maintenance on backup power systems

AUXILLARY POWER AND SUPPORT SYSTEMS (CONT'D)

<u>Paygrade</u>	<u>Task Type</u>	<u>Task Statements</u>
E4	CORE	Perform preventive maintenance on cathodic protection systems
E5	CORE	Repair cathodic protection systems
E4	CORE	Replace backup power systems and components
E4	CORE	Test backup power systems
E4	CORE	Test cathodic protection systems
E4	CORE	Troubleshoot backup power systems and components
E5	CORE	Troubleshoot cathodic protection systems
E5	CORE	Verify backup power system configurations
E5	CORE	Verify cathodic protection system configurations

DATA CONVERSION AND DISTRIBUTION

<u>Paygrade</u>	<u>Task Type</u>	<u>Task Statements</u>
E5	CORE	Configure computer and peripheral systems
E4	CORE	Configure data conversion and distribution systems
E4	CORE	Configure Data Multiplexing Systems (DMS) (i.e., Fiber Optic Data Multiplexing System (FODMS) and Gigabit Ethernet Data Multiplexing System (GEDMS))
E5	CORE	Configure network systems
E5	NON-CORE	Configure Programmable Logic Controllers (PLC)
E4	NON-CORE	Establish data links (i.e., dual-net multi-frequency data links and multi-frequency links)
E5	NON-CORE	Maintain network security
E5	CORE	Maintain system password accounts
E6	CORE	Manage network software and firmware operations
E6	CORE	Manage system password accounts
E4	CORE	Perform preventive maintenance on computer and peripheral systems
E4	CORE	Perform preventive maintenance on data conversion and distribution systems
E4	CORE	Perform preventive maintenance on Data Multiplexing Systems (DMS) (i.e., Fiber Optic Data Multiplexing System (FODMS) and Gigabit Ethernet Data Multiplexing System (GEDMS))
E4	CORE	Perform preventive maintenance on network systems
E4	CORE	Perform preventive maintenance on Programmable Logic Controllers (PLC)
E4	CORE	Repair computer and peripheral systems
E5	CORE	Repair data conversion and distribution systems
E4	NON-CORE	Repair data link systems
E4	CORE	Repair Data Multiplexing Systems (DMS) (i.e., Fiber Optic Data Multiplexing System (FODMS) and Gigabit Ethernet Data Multiplexing System (GEDMS))
E5	CORE	Repair network systems
E4	CORE	Repair Programmable Logic Controllers (PLC)
E4	CORE	Test computer and peripheral systems
E4	CORE	Test data conversion and distribution systems
E4	NON-CORE	Test data link systems
E4	CORE	Test Data Multiplexing Systems (DMS) (i.e., Fiber Optic Data Multiplexing System (FODMS) and Gigabit Ethernet Data Multiplexing System (GEDMS))

DATA CONVERSION AND DISTRIBUTION (CONT'D)

<u>Paygrade</u>	<u>Task Type</u>	<u>Task Statements</u>
E4	CORE	Test network systems
E4	CORE	Test Programmable Logic Controllers (PLC)
E4	CORE	Troubleshoot computer and peripheral systems
E4	CORE	Troubleshoot data conversion and distribution systems
E4	NON-CORE	Troubleshoot data link systems
E4	CORE	Troubleshoot Data Multiplexing Systems (DMS) (i.e., Fiber Optic Data Multiplexing System (FODMS) and Gigabit Ethernet Data Multiplexing System (GEDMS))
E5	CORE	Troubleshoot network systems
E4	CORE	Troubleshoot Programmable Logic Controllers (PLC)
E5	CORE	Update network software and firmware
E5	CORE	Verify data conversion and distribution system configurations
E4	NON-CORE	Verify data link system configurations
E5	CORE	Verify Data Multiplexing System (DMS) (i.e., Fiber Optic Data Multiplexing System (FODMS) and Gigabit Ethernet Data Multiplexing System (GEDMS)) configurations
E6	CORE	Verify network system configurations

EQUIPMENT ADMINISTRATION

<u>Paygrade</u>	<u>Task Type</u>	<u>Task Statements</u>
E5	NON-CORE	Calibrate gauges (e.g., temperature, pressure, etc.)
E4	CORE	Calibrate Interior Communications (IC) systems and equipment
E4	CORE	Collect equipment and system status data
E7	CORE	Coordinate equipment certifications and recertifications
E4	CORE	Document equipment and system status data
E5	CORE	Draft procedural documents (e.g., Standard Operating Procedures (SOP), Temporary Standing Orders (TSO), Departure From Specifications (DFS), etc.)
E4	CORE	Inspect work areas, tools, and equipment
E5	CORE	Install Interior Communications (IC) equipment
E4	CORE	Inventory controlled equipment
E7	CORE	Manage divisional equipment and system configurations
E7	CORE	Manage divisional maintenance operations
E6	CORE	Manage equipment certifications and recertifications
E4	CORE	Perform Emergency Action Plans (EAP) and Emergency Destruction Plans (EDP)
E4	CORE	Provide equipment installation and alteration assistance
E6	CORE	Supervise divisional equipment and system configurations
E6	CORE	Supervise divisional maintenance operations
E5	CORE	Supervise equipment installations, testing, and alterations
E5	CORE	Supervise work center equipment and system configurations
E5	CORE	Supervise work center maintenance operations
E6	CORE	Verify equipment installations, testing, and alterations

INDICATING, METERING, AND ORDERING

<u>Paygrade</u>	<u>Task Type</u>	<u>Task Statements</u>
E5	CORE	Calibrate ship's control console systems
E5	CORE	Calibrate steering control systems
E4	CORE	Calibrate Tank Level Indicators (TLI)
E4	CORE	Configure salinity indicating systems (e.g., demineralizing systems, evaporators, reverse osmosis systems, etc.)
E5	CORE	Configure ship's control console systems
E5	CORE	Configure steering control systems
E4	CORE	Configure Tank Level Indicators (TLI)
E4	CORE	Perform preventive maintenance on Ballast Control Console (BCC) systems
E4	CORE	Perform preventive maintenance on salinity indicating systems (e.g., demineralizing systems, evaporators, reverse osmosis systems, etc.)
E4	CORE	Perform preventive maintenance on ship's control console systems
E4	CORE	Perform preventive maintenance on steering control systems
E4	CORE	Perform preventive maintenance on Tank Level Indicators (TLI)
E4	NON-CORE	Repair Ballast Control Console (BCC) systems
E4	CORE	Repair salinity indicating systems (e.g., demineralizing systems, evaporators, reverse osmosis systems, etc.)
E5	CORE	Repair ship's control console systems
E5	CORE	Repair steering control systems
E4	CORE	Repair Tank Level Indicators (TLI)
E4	CORE	Replace Ballast Control Console (BCC) system components
E4	CORE	Test Ballast Control Console (BCC) systems
E4	CORE	Test salinity indicating systems (e.g., demineralizing systems, evaporators, reverse osmosis systems, etc.)
E5	CORE	Test ship's control console systems
E5	CORE	Test steering control systems
E4	CORE	Test Tank Level Indicators (TLI)
E4	CORE	Troubleshoot Ballast Control Console (BCC) systems
E4	CORE	Troubleshoot salinity indicating systems (e.g., demineralizing systems, evaporators, reverse osmosis systems, etc.)
E5	CORE	Troubleshoot ship's control console systems
E5	CORE	Troubleshoot steering control systems
E4	CORE	Troubleshoot Tank Level Indicators (TLI)

INTERIOR COMMUNICATIONS (IC)

<u>Paygrade</u>	<u>Task Type</u>	<u>Task Statements</u>
E4	CORE	Alter amplified voice communication systems
E4	CORE	Configure amplified voice communication systems
E4	CORE	Configure Interior Communications (IC) switchboards
E4	CORE	Configure public address systems
E4	CORE	Configure ship's announcing systems
E4	CORE	Configure ship's service telephone systems and peripherals (e.g., handsets, biscuit boxes, shore connections, etc.)

INTERIOR COMMUNICATIONS (IC) (CONT'D)

<u>Paygrade</u>	<u>Task Type</u>	<u>Task Statements</u>
E4	CORE	Configure sound-powered telephone systems and peripherals (e.g., circuits, boxes, switchboards, bell buzzer systems, etc.)
E5	CORE	Design public address systems
E4	NON-CORE	Erect public address systems
E6	CORE	Manage implementation of telecommunication plans for ship's service telephone systems
E4	CORE	Perform preventive maintenance on amplified voice communication systems
E4	CORE	Perform preventive maintenance on Interior Communications (IC) switchboards
E4	CORE	Perform preventive maintenance on ship's announcing systems
E4	CORE	Perform preventive maintenance on ship's service telephone systems and peripherals (e.g., handsets, biscuit boxes, shore connections, etc.)
E4	CORE	Perform preventive maintenance on sound-powered telephone systems and peripherals (e.g., circuits, boxes, switchboards, bell buzzer systems, etc.)
E4	CORE	Repair amplified voice communication systems
E5	CORE	Repair Interior Communications (IC) switchboards
E4	CORE	Repair ship's announcing systems
E4	CORE	Repair ship's service telephone systems and peripherals (e.g., handsets, biscuit boxes, shore connections, etc.)
E4	CORE	Repair sound-powered telephone systems and peripherals (e.g., circuits, boxes, switchboards, bell buzzer systems, etc.)
E4	CORE	Replace public address systems and components
E4	CORE	Test amplified voice communication systems
E4	CORE	Test Interior Communications (IC) switchboards
E4	CORE	Test public address systems
E4	CORE	Test ship's announcing systems
E4	CORE	Test ship's service telephone systems and peripherals (e.g., handsets, biscuit boxes, shore connections, etc.)
E4	CORE	Test sound-powered telephone systems and peripherals (e.g., circuits, boxes, switchboards, bell buzzer systems, etc.)
E4	CORE	Troubleshoot amplified voice communication systems
E5	CORE	Troubleshoot Interior Communications (IC) switchboards
E4	CORE	Troubleshoot public address systems
E4	CORE	Troubleshoot ship's announcing systems
E4	CORE	Troubleshoot ship's service telephone systems and peripherals (e.g., handsets, biscuit boxes, shore connections, etc.)
E4	CORE	Troubleshoot sound-powered telephone systems and peripherals (e.g., circuits, boxes, switchboards, bell buzzer systems, etc.)
E6	CORE	Verify ship's announcing system configurations

MULTIMEDIA ENTERTAINMENT, COMMUNICATION, AND VIDEO MONITORING SYSTEMS

<u>Paygrade</u>	<u>Task Type</u>	<u>Task Statements</u>
E4	CORE	Align Television Direct-to-Sailor (TV-DTS) system antennas
E4	CORE	Alter Audio/Video (A/V) entertainment systems

MULTIMEDIA ENTERTAINMENT, COMMUNICATION, AND VIDEO MONITORING SYSTEMS (CONT'D)

<u>Paygrade</u>	<u>Task Type</u>	<u>Task Statements</u>
E4	CORE	Alter centralized video distribution systems
E4	CORE	Alter telecommunication systems
E4	CORE	Alter Television Direct-to-Sailor (TV-DTS) systems
E4	NON-CORE	Alter video communication systems
E4	CORE	Broadcast Audio/Video (A/V) entertainment
E5	CORE	Broadcast telecommunications
E5	NON-CORE	Broadcast video communications
E4	CORE	Broadcast video monitoring feeds (e.g., Closed Circuit Televisions (CCTV), flight deck surveillance camera systems, etc.)
E4	CORE	Calibrate Television Direct-to-Sailor (TV-DTS) systems
E4	CORE	Configure Audio/Video (A/V) entertainment systems
E6	CORE	Configure centralized video distribution systems
E4	CORE	Configure telecommunication systems
E4	CORE	Configure Television Direct-to-Sailor (TV-DTS) systems
E5	CORE	Configure video communication systems
E4	CORE	Configure video monitoring systems (e.g., Closed Circuit Televisions (CCTV), flight deck surveillance camera systems, etc.)
E6	CORE	Design centralized video distribution systems
E5	CORE	Install Audio/Video (A/V) entertainment systems
E4	CORE	Install centralized video distribution systems
E4	CORE	Install Television Direct-to-Sailor (TV-DTS) systems
E4	CORE	Inventory Naval media assets
E4	CORE	Perform preventive maintenance on Audio/Video (A/V) entertainment systems
E4	CORE	Perform preventive maintenance on centralized video distribution systems
E4	CORE	Perform preventive maintenance on Television Direct-to-Sailor (TV-DTS) systems
E4	CORE	Perform preventive maintenance on video monitoring systems (e.g., Closed Circuit Televisions (CCTV), flight deck surveillance camera systems, etc.)
E4	NON-CORE	Produce multimedia content
E4	CORE	Repair Audio/Video (A/V) entertainment systems
E4	CORE	Repair centralized video distribution systems
E4	CORE	Repair telecommunication systems
E4	CORE	Repair Television Direct-to-Sailor (TV-DTS) systems
E5	NON-CORE	Repair video communication systems
E4	CORE	Repair video monitoring systems (e.g., Closed Circuit Televisions (CCTV), flight deck surveillance camera systems, etc.)
E4	CORE	Test Audio/Video (A/V) entertainment systems
E4	CORE	Test centralized video distribution systems
E4	CORE	Test telecommunication systems
E4	CORE	Test Television Direct-to-Sailor (TV-DTS) systems
E5	NON-CORE	Test video communication systems

MULTIMEDIA ENTERTAINMENT, COMMUNICATION, AND VIDEO MONITORING SYSTEMS (CONT'D)

<u>Paygrade</u>	<u>Task Type</u>	<u>Task Statements</u>
E4	CORE	Test video monitoring systems (e.g., Closed Circuit Televisions (CCTV), flight deck surveillance camera systems, etc.)
E4	CORE	Troubleshoot Audio/Video (A/V) entertainment systems
E4	CORE	Troubleshoot centralized video distribution systems
E4	CORE	Troubleshoot telecommunication systems
E4	CORE	Troubleshoot Television Direct-to-Sailor (TV-DTS) systems
E5	NON-CORE	Troubleshoot video communication systems
E4	CORE	Troubleshoot video monitoring systems (e.g., Closed Circuit Televisions (CCTV), flight deck surveillance camera systems, etc.)
E5	CORE	Verify Television Direct-to-Sailor (TV-DTS) system configurations and alignments

NAVIGATION SYSTEMS

<u>Paygrade</u>	<u>Task Type</u>	<u>Task Statements</u>
E6	CORE	Calibrate navigation systems
E5	CORE	Calibrate wind speed and direction systems
E6	CORE	Configure navigation systems
E5	CORE	Configure ship's speed systems
E4	CORE	Configure wind speed and direction systems
E6	CORE	Extract data from navigation systems for diagnostics
E4	CORE	Perform preventive maintenance on navigation systems
E4	CORE	Perform preventive maintenance on ship's speed systems
E4	CORE	Perform preventive maintenance on wind speed and direction systems
E6	CORE	Repair navigation systems
E5	CORE	Repair ship's speed systems
E4	CORE	Repair wind speed and direction systems
E5	CORE	Supervise wind speed and direction system corrective maintenance
E6	CORE	Test navigation systems
E5	CORE	Test ship's speed systems
E4	CORE	Test wind speed and direction systems
E6	CORE	Troubleshoot navigation systems
E5	CORE	Troubleshoot ship's speed systems
E4	CORE	Troubleshoot wind speed and direction systems

TECHNICAL CORE FUNDAMENTALS

<u>Paygrade</u>	<u>Task Type</u>	<u>Task Statements</u>
E5	CORE	Align electromechanical (synchro/servo) systems
E4	CORE	Align valves
E4	CORE	Alter Commercial-Off-The-Shelf (COTS) and Non-Program of Record (Non-POR) systems (e.g., video, audio, communication, etc.)
E4	CORE	Analyze blueprints and ship's drawings

TECHNICAL CORE FUNDAMENTALS (CONT'D)

<u>Paygrade</u>	<u>Task Type</u>	<u>Task Statements</u>
E4	CORE	Analyze schematics (e.g., mechanical drawings, electronic schematics, piping and valve drawings, etc.)
E4	CORE	Analyze technical manuals
E7	CORE	Asses Combat Information Center (CIC)/Combat Direction Center (CDC) systems operations and tactical impact
E4	CORE	Calibrate electromechanical (synchro/servo) systems
E5	CORE	Conduct training evolutions (e.g., Combat Systems Training Teams (CSTT), etc.)
E5	CORE	Conduct watchstander briefs
E4	CORE	Configure Alternating Current (AC) circuits
E4	CORE	Configure combat systems equipment
E4	CORE	Configure combat systems for conditions of Hazards of Electromagnetic Radiation to Ordnance (HERO), Hazards of Electromagnetic Radiation to Personnel (HERP), and Hazards of Electromagnetic Radiation to Fuel (HERF)
E4	CORE	Configure Commercial-Off-The-Shelf (COTS) and Non-Program of Record (Non-POR) systems (e.g., video, audio, communication, etc.)
E4	CORE	Configure digital circuits
E4	CORE	Configure Direct Current (DC) circuits
E4	CORE	Configure electromechanical (synchro/servo) systems
E4	NON-CORE	Configure Tactical Air Navigation (TACAN) systems
E5	CORE	Control Electromagnetic Interference (EMI) and Radio Frequency Interference (RFI) effects on electronic systems
E7	CORE	Coordinate combat systems during casualty conditions
E6	CORE	Coordinate Combat Systems Alignment (CSA) evolutions
E7	CORE	Coordinate configurations of combat systems for conditions of Hazards of Electromagnetic Radiation to Ordnance (HERO), Hazards of Electromagnetic Radiation to Personnel (HERP), and Hazards of Electromagnetic Radiation to Fuel (HERF)
E6	CORE	Coordinate training evolutions (e.g., Combat Systems Training Teams (CSTT), etc.)
E5	CORE	Design Commercial-Off-The-Shelf (COTS) and Non-Program of Record (Non-POR) systems (e.g., video, audio, communication, etc.)
E5	CORE	Develop training evolutions (e.g., Combat Systems Training Teams (CSTT), etc.)
E5	CORE	Evaluate training evolutions (e.g., Combat Systems Training Teams (CSTT), etc.)
E4	NON-CORE	Install Commercial-Off-The-Shelf (COTS) and Non-Program of Record (Non-POR) systems (e.g., video, audio, communication, etc.)
E5	NON-CORE	Load image software
E6	CORE	Manage combat systems during casualty conditions
E5	CORE	Manage Combat Systems Alignment (CSA) evolutions
E5	CORE	Manage combat systems equipment configurations
E6	CORE	Manage configurations of combat systems for conditions of Hazards of Electromagnetic Radiation to Ordnance (HERO), Hazards of Electromagnetic Radiation to Personnel (HERP), and Hazards of Electromagnetic Radiation to Fuel (HERF)
E4	CORE	Perform basic soldering on electrical and electronic equipment

TECHNICAL CORE FUNDAMENTALS (CONT'D)

<u>Paygrade</u>	<u>Task Type</u>	<u>Task Statements</u>
E4	CORE	Perform Combat Systems Alignments (CSA)
E4	CORE	Perform Combat Systems Operational Sequencing System (CSOSS) procedures (e.g., casualty responses/operations, normal operations, energize/de-energize equipment, etc.)
E4	CORE	Perform corrosion prevention and control procedures on Interior Communications (IC) equipment and systems
E4	CORE	Perform external communications (i.e., ship-to-ship, ship-to-shore, and ship-to-air)
E4	CORE	Perform preventive maintenance on Alternating Current (AC) circuits
E4	CORE	Perform preventive maintenance on Commercial-Off-The-Shelf (COTS) and Non-Program of Record (Non-POR) systems (e.g., video, audio, communication, etc.)
E4	CORE	Perform preventive maintenance on digital circuits
E4	CORE	Perform preventive maintenance on Direct Current (DC) circuits
E4	CORE	Perform preventive maintenance on electromechanical (synchro/servo) systems
E4	CORE	Perform preventive maintenance on valves
E5	CORE	Procure Commercial-Off-The-Shelf (COTS) and Non-Program of Record (Non-POR) systems (e.g., video, audio, communication, etc.)
E4	CORE	Provide Interior Communications (IC) technical support
E4	CORE	Repair Alternating Current (AC) circuits
E5	NON-CORE	Repair Commercial-Off-The-Shelf (COTS) and Non-Program of Record (Non-POR) systems (e.g., video, audio, communication, etc.)
E4	CORE	Repair digital circuits
E4	CORE	Repair Direct Current (DC) circuits
E4	CORE	Repair electromechanical (synchro/servo) systems
E5	NON-CORE	Repair fiber optic cables and connectors
E4	CORE	Repair interconnecting cables and connectors
E4	NON-CORE	Repair Line of Sight (LOS) tactical networks
E4	CORE	Repair power conversion and distribution systems
E4	CORE	Repair power supplies
E4	CORE	Repair Radio Frequency (RF) circuits
E4	NON-CORE	Repair valves
E4	CORE	Replace Alternating Current and Direct Current (AC/DC) motors
E4	CORE	Replace Commercial-Off-The-Shelf (COTS) and Non-Program of Record (Non-POR) systems (e.g., video, audio, communication, etc.)
E4	CORE	Replace valves
E4	CORE	Safeguard classified material
E4	CORE	Set Emission Control (EMCON) conditions
E5	CORE	Supervise combat systems during casualty conditions
E5	CORE	Supervise configurations of combat systems for conditions of Hazards of Electromagnetic Radiation to Ordnance (HERO), Hazards of Electromagnetic Radiation to Personnel (HERP), and Hazards of Electromagnetic Radiation to Fuel (HERF)
E4	CORE	Test Alternating Current (AC) circuits

TECHNICAL CORE FUNDAMENTALS (CONT'D)

<u>Paygrade</u>	<u>Task Type</u>	<u>Task Statements</u>
E4	CORE	Test Alternating Current and Direct Current (AC/DC) motors
E4	CORE	Test Commercial-Off-The-Shelf (COTS) and Non-Program of Record (Non-POR) systems (e.g., video, audio, communication, etc.)
E4	CORE	Test digital circuits
E4	CORE	Test Direct Current (DC) circuits
E4	CORE	Test electromechanical (synchro/servo) systems
E4	CORE	Test fiber optic cables and connectors
E4	CORE	Test interconnecting cables and connectors
E4	CORE	Test power supplies
E4	CORE	Test Radio Frequency (RF) circuits
E4	CORE	Test valves
E5	CORE	Train technicians in casualty control procedures
E4	CORE	Troubleshoot Alternating Current (AC) circuits
E5	CORE	Troubleshoot Alternating Current and Direct Current (AC/DC) motors
E4	CORE	Troubleshoot Commercial-Off-The-Shelf (COTS) and Non-Program of Record (Non-POR) systems (e.g., video, audio, communication, etc.)
E4	CORE	Troubleshoot digital circuits
E4	CORE	Troubleshoot Direct Current (DC) circuits
E4	CORE	Troubleshoot electromechanical (synchro/servo) systems
E4	CORE	Troubleshoot fiber optic cables and connectors
E4	CORE	Troubleshoot interconnecting cables and connectors
E4	NON-CORE	Troubleshoot Line of Sight (LOS) tactical networks
E4	CORE	Troubleshoot power conversion and distribution systems
E4	CORE	Troubleshoot power supplies
E4	CORE	Troubleshoot Radio Frequency (RF) circuits
E4	CORE	Troubleshoot valves
E5	CORE	Verify Alternating Current (AC) circuit configurations
E5	CORE	Verify digital circuit configurations
E5	CORE	Verify Direct Current (DC) circuit configurations
E6	CORE	Verify electromechanical (synchro/servo) system configurations and alignments
E6	CORE	Verify valve alignments

VISUAL LANDING AIDS (VLA)

<u>Paygrade</u>	<u>Task Type</u>	<u>Task Statements</u>
E4	CORE	Align lift systems (i.e., hydraulic, pneumatic, and electromechanical)
E4	CORE	Alter lift systems (i.e., hydraulic, pneumatic, and electromechanical)
E4	CORE	Calibrate lift systems (i.e., hydraulic, pneumatic, and electromechanical)
E4	CORE	Calibrate Visual Landing Aid (VLA) systems
E4	CORE	Configure Visual Landing Aid (VLA) systems
E4	CORE	Perform preventive maintenance on lift systems (i.e., hydraulic, pneumatic, and electromechanical)
E4	CORE	Perform preventive maintenance on Visual Landing Aid (VLA) systems

VISUAL LANDING AIDS (VLA) (CONT'D)

<u>Paygrade</u>	<u>Task Type</u>	<u>Task Statements</u>
E4	CORE	Repair lift systems (i.e., hydraulic, pneumatic, and electromechanical)
E4	CORE	Repair Visual Landing Aid (VLA) systems
E4	CORE	Test lift systems (i.e., hydraulic, pneumatic, and electromechanical)
E4	CORE	Test Visual Landing Aid (VLA) systems
E4	CORE	Troubleshoot lift systems (i.e., hydraulic, pneumatic, and electromechanical)
E4	CORE	Troubleshoot Visual Landing Aid (VLA) systems

Job Title**Interior Communications Administrator****Job Code****003735****Job Family**

Installation, Maintenance, and Repair

NOC

TBD

Short Title (30 Characters)

INTERIOR COMMUNICATIONS ADMN

Short Title (14 Characters)

INT COMMS ADMN

Pay Plan

Enlisted

Career Field

IC

Other Relationships and Rules

NEC VXXX series and other NECs as assigned

Job Description

Interior Communications Administrators manage large projects and provide mentorship to develop junior personnel; prepare progress reports and maintenance schedules for Interior Communications (IC) systems for and during overhaul periods; plan, staff, direct, and control multiple projects; and mentor technicians and operators.

DoD Relationship**Group Title**

Interior Communications

DoD Code

162300

O*NET Relationship**Occupation Title**

First-Line Supervisors of
Mechanics, Installers, and
Repairers

SOC Code

49-1011.00

Job Family

Installation, Maintenance, and
Repair

Skills*Management of Material Resources**Systems Analysis**Quality Control Analysis**Systems Evaluation**Management of Personnel Resources**Operation and Control**Judgment and Decision Making**Coordination**Instructing**Time Management***Abilities***Written Comprehension**Information Ordering**Oral Expression**Problem Sensitivity**Written Expression**Inductive Reasoning**Visualization**Time Sharing**Deductive Reasoning**Control Precision***ALARM, SAFETY, AND WARNING SYSTEMS****Paygrade**

E5

Task Type

NON-CORE

Task Statements

Alter alarm, safety, and warning systems

E5

CORE

Verify alarm, safety, and warning system configurations

E5

CORE

Verify Machinery Control Consoles (MCC) configurations

AUXILLARY POWER AND SUPPORT SYSTEMS**Paygrade**

E5

Task Type

CORE

Task Statements

Verify backup power system configurations

E5

CORE

Verify cathodic protection system configurations

DATA CONVERSION AND DISTRIBUTION**Paygrade**

E6

Task Type

CORE

Task Statements

Inventory network software and firmware

E5

NON-CORE

Maintain network security

E5

CORE

Maintain system password accounts

E7

NON-CORE

Manage network security

E6

CORE

Manage network software and firmware operations

E6

CORE

Manage system password accounts

E6

NON-CORE

Supervise network security

E5

CORE

Update network software and firmware

E5

CORE

Verify data conversion and distribution system configurations

E6

CORE

Verify network system configurations

EQUIPMENT ADMINISTRATION

<u>Paygrade</u>	<u>Task Type</u>	<u>Task Statements</u>
E6	NON-CORE	Analyze equipment and system status data
E7	CORE	Approve equipment installations, testing, and alterations
E5	NON-CORE	Calibrate gauges (e.g., temperature, pressure, etc.)
E4	CORE	Collect equipment and system status data
E7	CORE	Coordinate equipment certifications and recertifications
E7	CORE	Coordinate equipment installations, testing, and alterations
E7	CORE	Develop equipment status briefs and reports
E4	CORE	Document equipment and system status data
E5	CORE	Draft procedural documents (e.g., Standard Operating Procedures (SOP), Temporary Standing Orders (TSO), Departure From Specifications (DFS), etc.)
E5	CORE	Interpret requirements from technical briefs, notices, and bulletins
E5	CORE	Inventory Maintenance Assistance Modules (MAM)
E4	CORE	Maintain Interior Communications (IC) systems and equipment calibration records
E7	CORE	Manage calibration programs
E7	CORE	Manage controlled equipment
E7	CORE	Manage divisional equipment and system configurations
E7	CORE	Manage divisional maintenance operations
E6	CORE	Manage equipment certifications and recertifications
E7	CORE	Manage Maintenance Assistance Modules (MAM) usage
E7	CORE	Manage procedural documents (e.g., Standard Operating Procedures (SOP), Temporary Standing Orders (TSO), Departure From Specifications (DFS), etc.)
E6	CORE	Manage safety programs and instructions (e.g., aloft, electrical equipment, etc.)
E6	CORE	Supervise divisional equipment and system configurations
E6	CORE	Supervise divisional maintenance operations
E5	CORE	Supervise electronic test equipment inventories
E5	CORE	Supervise equipment installations, testing, and alterations
E6	CORE	Supervise Maintenance Assistance Modules (MAM) usage
E5	CORE	Supervise work center equipment and system configurations
E5	CORE	Supervise work center maintenance operations
E6	CORE	Verify equipment installations, testing, and alterations
E6	CORE	Verify procedural documents (e.g., Standard Operating Procedures (SOP), Temporary Standing Orders (TSO), Departure From Specifications (DFS), etc.)

INDICATING, METERING, AND ORDERING

<u>Paygrade</u>	<u>Task Type</u>	<u>Task Statements</u>
E7	CORE	Supervise steering control system corrective maintenance
E7	CORE	Verify ship's control console system configurations
E7	CORE	Verify steering control system configurations

INTERIOR COMMUNICATIONS (IC)

<u>Paygrade</u>	<u>Task Type</u>	<u>Task Statements</u>
E7	CORE	Approve public address system designs
E5	CORE	Design public address systems

INTERIOR COMMUNICATIONS (IC) (CONT'D)

<u>Paygrade</u>	<u>Task Type</u>	<u>Task Statements</u>
E6	CORE	Manage implementation of telecommunication plans for ship's service telephone systems
E5	CORE	Verify Interior Communications (IC) switchboard configurations
E6	CORE	Verify ship's service telephone system and peripherals (e.g., handsets, biscuit boxes, shore connections, etc.) configurations
E6	CORE	Verify sound-powered telephone system and peripherals (e.g., circuits, boxes, switchboards, bell buzzer systems, etc.) configurations

MULTIMEDIA ENTERTAINMENT, COMMUNICATION, AND VIDEO MONITORING SYSTEMS

<u>Paygrade</u>	<u>Task Type</u>	<u>Task Statements</u>
E4	CORE	Alter centralized video distribution systems
E7	CORE	Approve centralized video distribution system designs
E7	CORE	Approve multimedia content
E6	CORE	Design centralized video distribution systems
E4	CORE	Inventory Naval media assets
E5	CORE	Manage Naval media assets
E6	CORE	Supervise Audio/Video (A/V) entertainment broadcasts
E6	CORE	Supervise Audio/Video (A/V) entertainment system installations
E6	CORE	Supervise centralized video distribution system installations
E7	CORE	Supervise video communication broadcasts
E6	CORE	Supervise video monitoring feed broadcasts (e.g., Closed Circuit Televisions (CCTV), flight deck surveillance camera systems, etc.)
E6	CORE	Verify multimedia content
E6	CORE	Verify telecommunication readiness
E5	CORE	Verify Television Direct-to-Sailor (TV-DTS) system configurations and alignments

NAVIGATION SYSTEMS

<u>Paygrade</u>	<u>Task Type</u>	<u>Task Statements</u>
E6	CORE	Extract data from navigation systems for diagnostics
E7	CORE	Supervise navigation system corrective maintenance
E6	CORE	Verify navigation system configurations
E6	CORE	Verify ship's speed system configurations

TECHNICAL CORE FUNDAMENTALS

<u>Paygrade</u>	<u>Task Type</u>	<u>Task Statements</u>
E5	CORE	Align electromechanical (synchro/servo) systems
E4	CORE	Analyze technical manuals
E7	CORE	Approve Commercial-Off-The-Shelf (COTS) and Non-Program of Record (Non-POR) system (e.g., video, audio, communication, etc.) designs
E7	CORE	Approve Commercial-Off-The-Shelf (COTS) and Non-Program of Record (Non-POR) system (e.g., video, audio, communication, etc.) procurements
E7	CORE	Asses Combat Information Center (CIC)/Combat Direction Center (CDC) systems operations and tactical impact
E5	CORE	Conduct training evolutions (e.g., Combat Systems Training Teams (CSTT), etc.)

TECHNICAL CORE FUNDAMENTALS (CONT'D)

<u>Paygrade</u>	<u>Task Type</u>	<u>Task Statements</u>
E5	CORE	Conduct watchstander briefs
E7	CORE	Coordinate combat systems during casualty conditions
E6	CORE	Coordinate Combat Systems Alignment (CSA) evolutions
E7	CORE	Coordinate configurations of combat systems for conditions of Hazards of Electromagnetic Radiation to Ordnance (HERO), Hazards of Electromagnetic Radiation to Personnel (HERP), and Hazards of Electromagnetic Radiation to Fuel (HERF)
E7	CORE	Coordinate Interior Communications (IC) watchstander qualifications and processes
E7	CORE	Coordinate personnel qualification and certification programs
E6	CORE	Coordinate training evolutions (e.g., Combat Systems Training Teams (CSTT), etc.)
E5	CORE	Design Commercial-Off-The-Shelf (COTS) and Non-Program of Record (Non-POR) systems (e.g., video, audio, communication, etc.)
E5	CORE	Develop training evolutions (e.g., Combat Systems Training Teams (CSTT), etc.)
E6	CORE	Draft Casualty Reports (CASREP)
E5	CORE	Evaluate training evolutions (e.g., Combat Systems Training Teams (CSTT), etc.)
E6	CORE	Manage combat systems during casualty conditions
E5	CORE	Manage Combat Systems Alignment (CSA) evolutions
E5	CORE	Manage combat systems equipment configurations
E7	CORE	Manage Combat Systems Operational Sequencing System (CSOSS) operations
E6	CORE	Manage configurations of combat systems for conditions of Hazards of Electromagnetic Radiation to Ordnance (HERO), Hazards of Electromagnetic Radiation to Personnel (HERP), and Hazards of Electromagnetic Radiation to Fuel (HERF)
E7	CORE	Manage equipment Casualty Reporting (CASREP) process
E6	CORE	Manage Interior Communications (IC) watchstander qualifications and processes
E6	CORE	Manage personnel qualification and certification programs
E4	CORE	Perform external communications (i.e., ship-to-ship, ship-to-shore, and ship-to-air)
E5	CORE	Procure Commercial-Off-The-Shelf (COTS) and Non-Program of Record (Non-POR) systems (e.g., video, audio, communication, etc.)
E4	CORE	Provide Interior Communications (IC) technical support
E4	CORE	Safeguard classified material
E5	CORE	Supervise Interior Communications (IC) watchstander qualifications and processes
E5	CORE	Supervise personnel qualification and certification programs
E6	CORE	Train personnel on Casualty Reports (CASREP) procedures
E5	CORE	Train technicians in casualty control procedures
E5	CORE	Update Combat Systems Operational Sequencing System (CSOSS)
E6	CORE	Validate Combat Systems Operational Sequencing System (CSOSS)
E6	CORE	Verify Commercial-Off-The-Shelf (COTS) and Non-Program of Record (Non-POR) system (e.g., video, audio, communication, etc.) configurations
E5	CORE	Verify digital circuit configurations
E6	CORE	Verify electromechanical (synchro/servo) system configurations and alignments
E6	CORE	Verify valve alignments

VISUAL LANDING AIDS (VLA)

<u>Paygrade</u>	<u>Task Type</u>	<u>Task Statements</u>
E6	CORE	Supervise Visual Landing Aid (VLA) system corrective maintenance
E7	CORE	Verify lift system (i.e., hydraulic, pneumatic, and electromechanical) alignments
E7	CORE	Verify Visual Landing Aid (VLA) system configurations